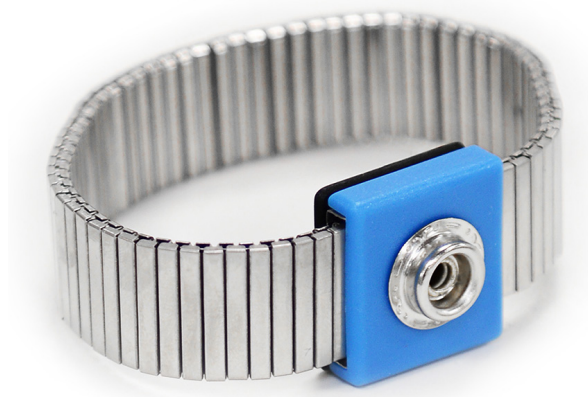


## PRODUCT

# ESD Metal Wrist Strap - Expandable

## TECHNICAL DATASHEET



## DESCRIPTION

An expandable antistatic wrist strap produced in metal that ensures consistent operator skin contact.

## ELECTRICAL PROPERTIES

- Outer wrist strap: insulative with polyurethane based polymer coating

## FEATURES

- This metal wrist strap incorporates a link system
- 10mm stud connection
- Wrist strap made of stainless steel
- Suitable for cleanroom use
- Easily fits any wrist size
- Elasticity: expansion ratio 1.5 : 1

PRODUCT CODE	DESCRIPTION	SIZE	NOTES
066-0012	ESD Metal Wrist Strap 10mm stud	14cm - Small	Each
066-0009	ESD Metal Wrist Strap 10mm stud	16.5cm - Medium	Each
066-0010	ESD Metal Wrist Strap 10mm stud	18.5cm - Large	Each
066-0014	ESD Metal Wrist Strap 10mm stud	20cm - X Large	Each

To request a quotation or for more information, please call **+44 (0)1473 836200**  
email [info@antistat.co.uk](mailto:info@antistat.co.uk) or visit [www.antistat.co.uk](http://www.antistat.co.uk)

IMPORTANT: This data sheet and its contents (the "Information") belong to Antistat or are licensed to it. No licence is granted for the use of it other than for information purposes in connection with the products to which it relates. No licence of any intellectual property rights is granted. The Information is subject to change without notice and replaces all data sheets previously supplied. The Information supplied is believed to be accurate but Antistat assumes no responsibility for its accuracy or completeness, any error in or omission from it or for any use made of it. Users of this data sheet should check for themselves the Information and the suitability of the products for their purpose and not make any assumptions based on information included or omitted. Liability for loss or damage resulting from any reliance on the Information or use of it (including liability resulting from negligence or where Antistat was aware of the possibility of such loss or damage arising) is excluded. © 2021 Antistat.