



Splice Tapes and Tools User Guide



Contents

How to guide	
How to use the semi automatic splicing tool with bandolier brass shims	3
How to cut the reel material	3
Remove the frame	4
How to use splice tape	5-6



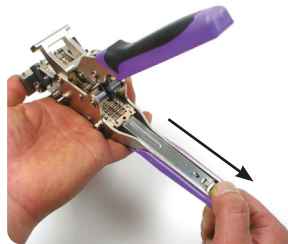
How to use the semi automatic splicing tool with bandolier brass shims

STEP 1



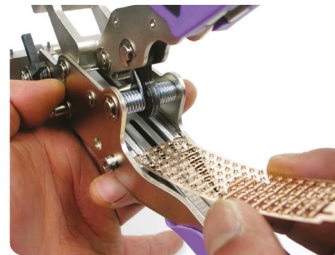
Remove splice clip frame from the pack.

STEP 2



Pull the slider towards the direction of the arrow.

STEP 3



Insert clips into the inside rail. Be careful not to damage / bend the frame.

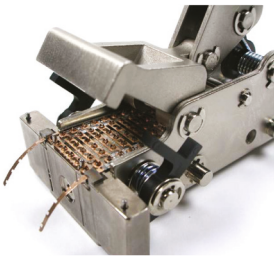
STEP 4



Push the button when the insert clip is inside the guide rail, insert the clip by lifting, avoiding the hooked protrusions.

How to cut the reel material

STEP 5



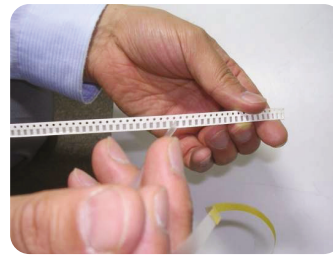
Confirm clips groove to hook the gauge pins.

STEP 6



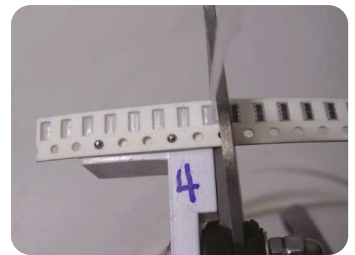
Place the carrier reel tape into the gauge pins, fix the lever and compress.

STEP 1



Peel off the reel cover tape to the first component.

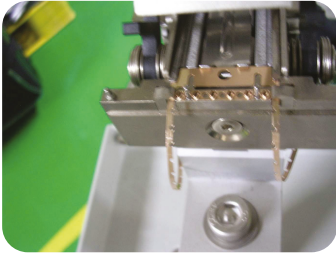
STEP 2



Cut reel using pitch scissor.

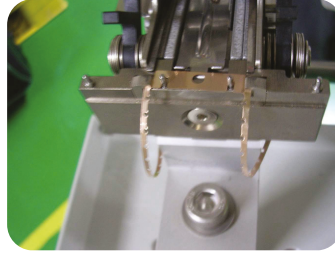
Remove the frame

STEP 1



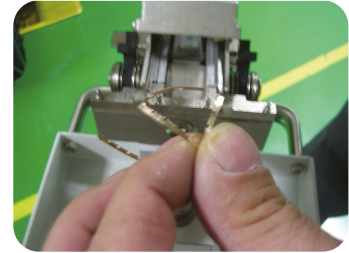
Check the final clip position.

STEP 2



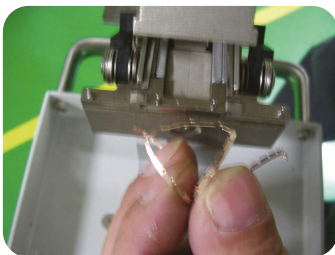
After splicing the final clip check the remaining frame. All clips should be used as per the picture. If there are any clips left then extra care should be taken when removing them from the frame.

STEP 3



Push the remaining frame forward and remove the frame. Please note this is particularly sharp and may cut.

STEP 4



Throw away the remaining frame without clip.

STEP 5



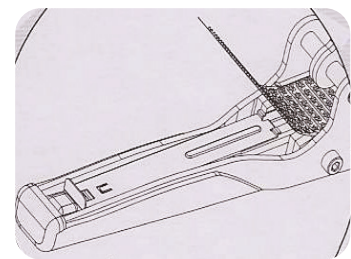
NOTES:

Do not detach clip from tool while the clip is inserted.

Do not splice without reel material.

Do not move slide the slider after inserted frame.

STEP 6



Please be careful when inserting the frame so that it does not bend and ensure the frame is in the correct position.

Please note if the pin and block is disassembled then the warranty will be invalid.

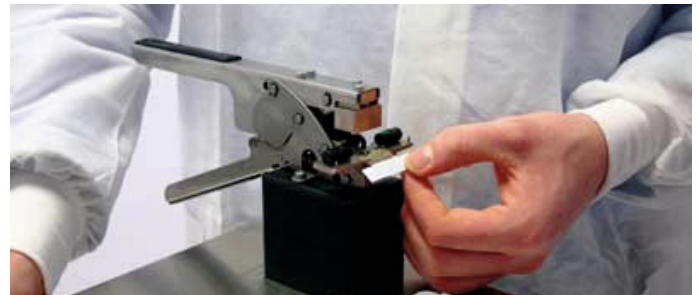
How to splice

STEP 1



When attaching a new reel, use the hand held splicing scissors to cut straight across the reel ensuring an accurate locating position for both reels.

STEP 2



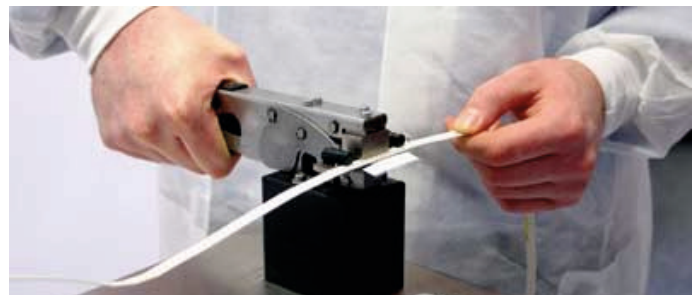
Place the splice clip onto the locating pins of the splice tool, so that the clear film points away from the splice tool, and the backing material faces upwards.

STEP 3



Place the beginning of the new reel on to the placement pin on the right side of the splice clip.

STEP 4



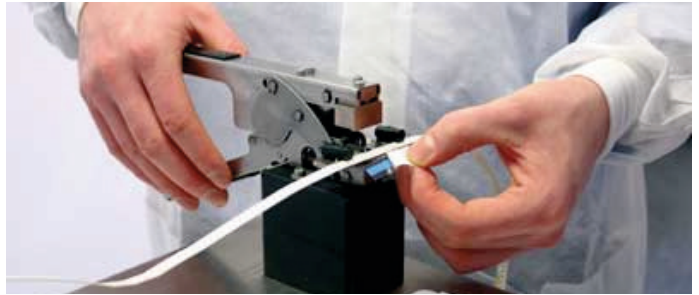
Place the end of the old reel on to the placement pin on the left hand side of the splice clip.

STEP 5



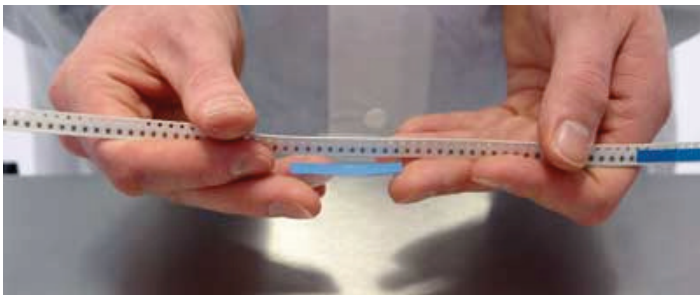
Compress the handles of the splice tool, until it clamps the splice clip.

STEP 6



Remove the backing material from the splice tape and discard.

STEP 7



Remove the now joined reels from the splice tool and fold the clear side of the tape over the joint to affix the new and old reels together.

STEP 8



Remove the backing material and observe a perfect and reliable joint.



ISO 9001 QUALITY ASSURED

We are focused on meeting our customer's expectations and delivering exceptional customer satisfaction.

CUSTOMER FOCUSED APPROACH

With over 30 years' experience, Antistat's service culture is the very core of our customer's success.

STANDARD OF EXCELLENCE

From beginning to end our team of knowledgeable experts are here to help.

Antistat

Integrity House, Easlea Road,
Bury St. Edmunds, Suffolk, IP32 7BY UK

UK +44 (0)1473 836 200 | info@antistat.co.uk | www.antistat.co.uk

US +1 512-580-4220 | info@antistat.com | www.antistat.com

Ant Group comprises of Antistat, Acupaq, Cygna, Integrity and Cyberpac, all of which are trading divisions of ESD Control Centre Ltd. Registered No. 2526954.
Registered Address: Integrity Cleanroom, Easlea Road, Bury St Edmunds, Suffolk IP32 7BY.